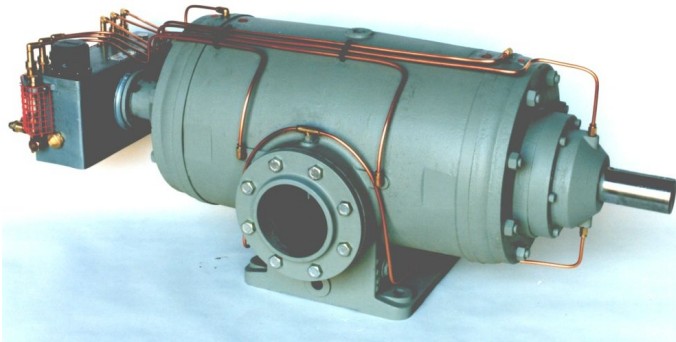
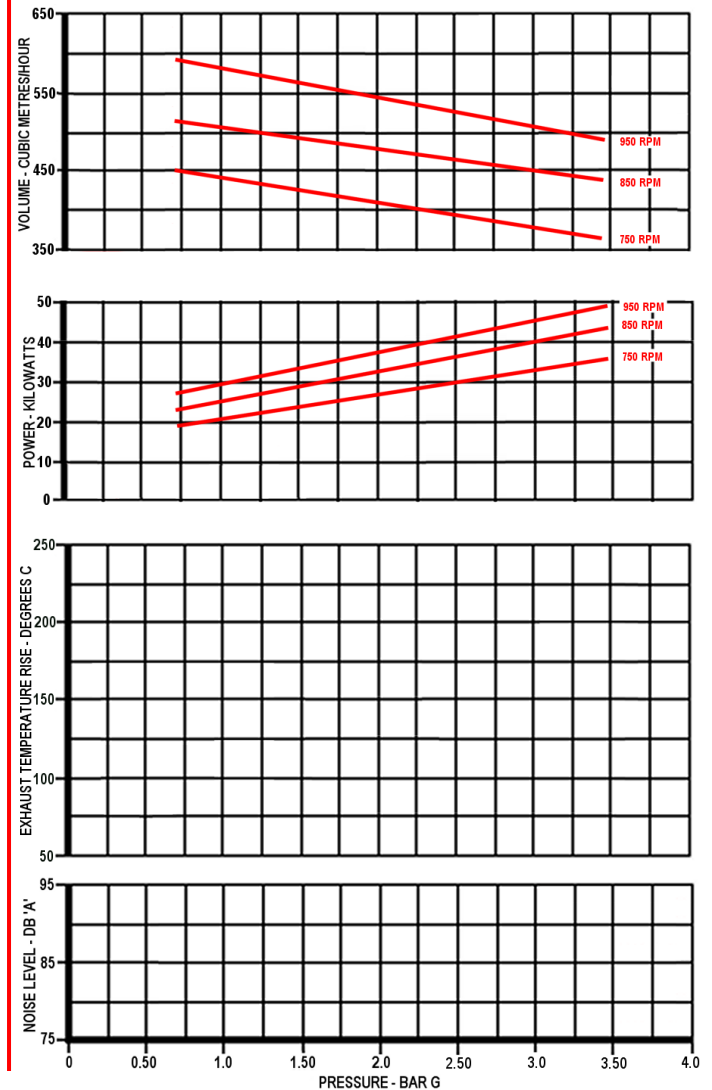




Model HD400 Watercooled Rotary Sliding Vane Compressor

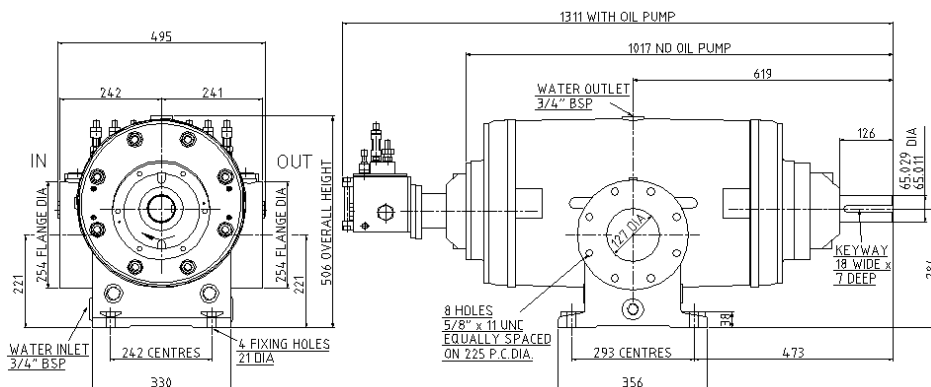


Air Performance Figures



Materials of Construction

Component	Material Specification
Cylinder	S.G. Iron EN-GJS-400-15 / EN-JS-1030 (EN1563)
Coverplates	S.G. Iron EN-GJS-400-15 / EN-JS-1030 (EN1563)
Rotor / Shaft	S.G. Iron EN-GJS-400-15 / EN-JS-1030 (EN1563)
End Caps	Grey Cast Iron EN-GJL-200 / EN-JL-1030 (EN1561)
Spacing Ring	Grey Cast Iron EN-GJL-200 / EN-JL-1030 (EN1561)
Blades	Non-Asbestos Resin Bonded Fabric
Ball Bearing	Single row deep groove with metal cage. Clearance - Normal
Roller Bearing	Single row, cylindrical roller with metal cage Clearance - Normal
Lip Seals	Steel cased, Viton
Mechanical Seals	Stainless Steel rings & spring, carbon face, S.G. Iron seat, Viton bellows & O-Ring



SPEED

Maximum Speed - 1000 RPM
Minimum Speed - 700 RPM

TEMPERATURE

Max. Inlet Temp. - 40 8C

INERTIA

Moment Of Inertia - 1.148 Kg^m²

WEIGHT

Approx. (No oil pump) - 491 kgs
Approx. (With oil pump) - 510 kgs

LUBRICATION

Bearings and blades lubricated using SHELL CORENA P150 oil

BEARING ARRANGEMENT

Ball bearing with roller bearing at drive end and roller bearing at rear end giving approximate life values of drive end 28000 hours and rear end 42000 hours.